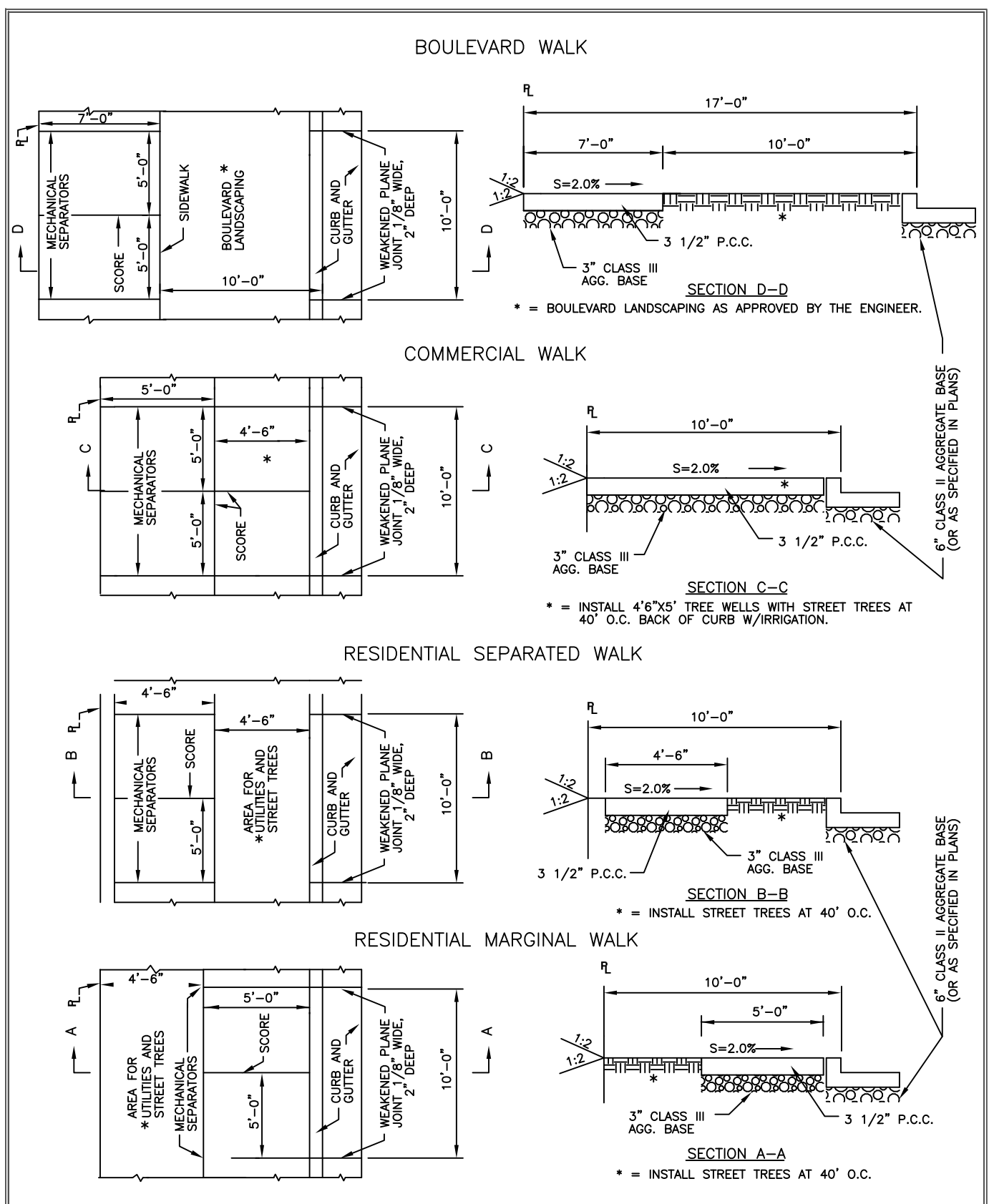
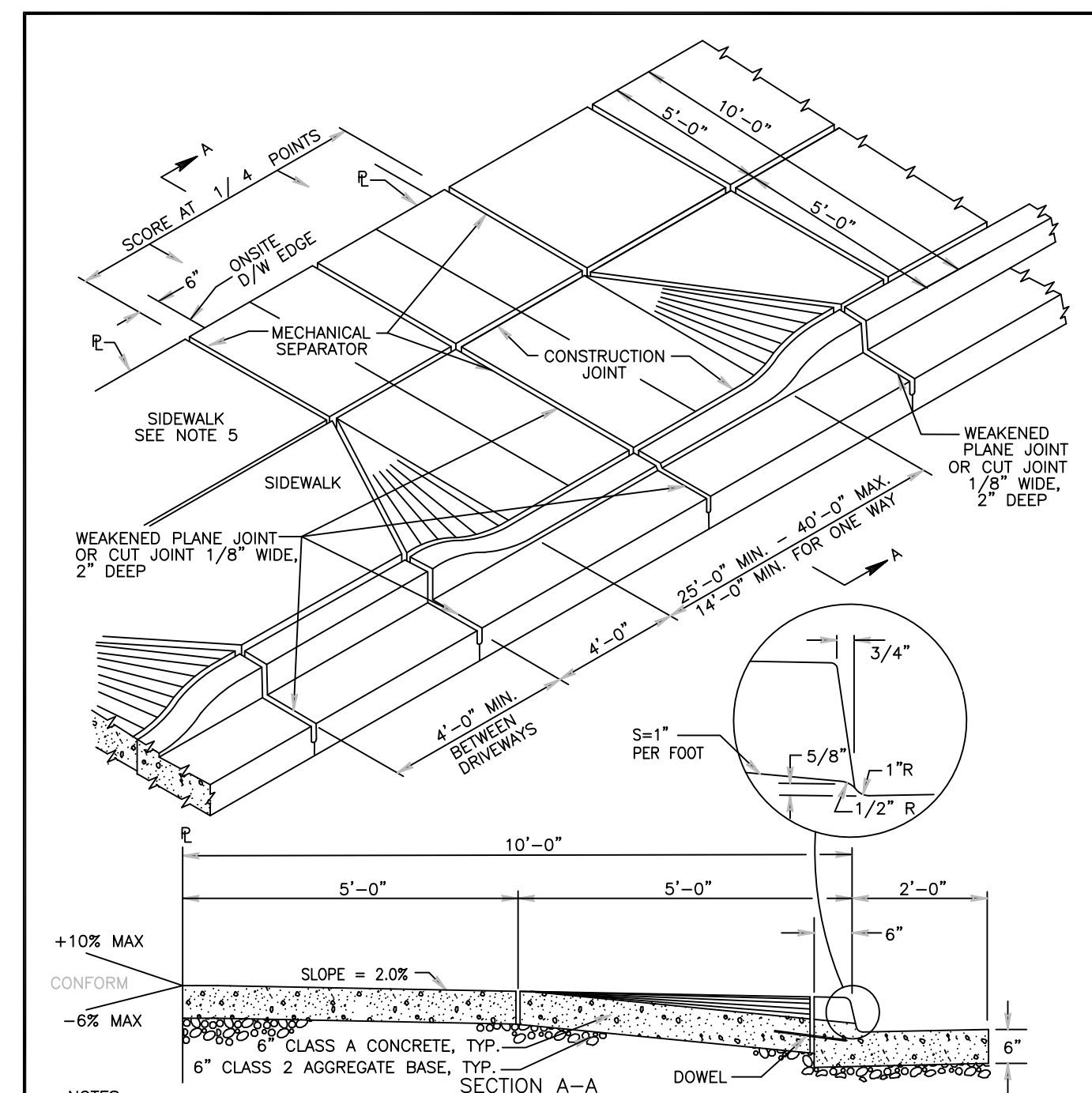


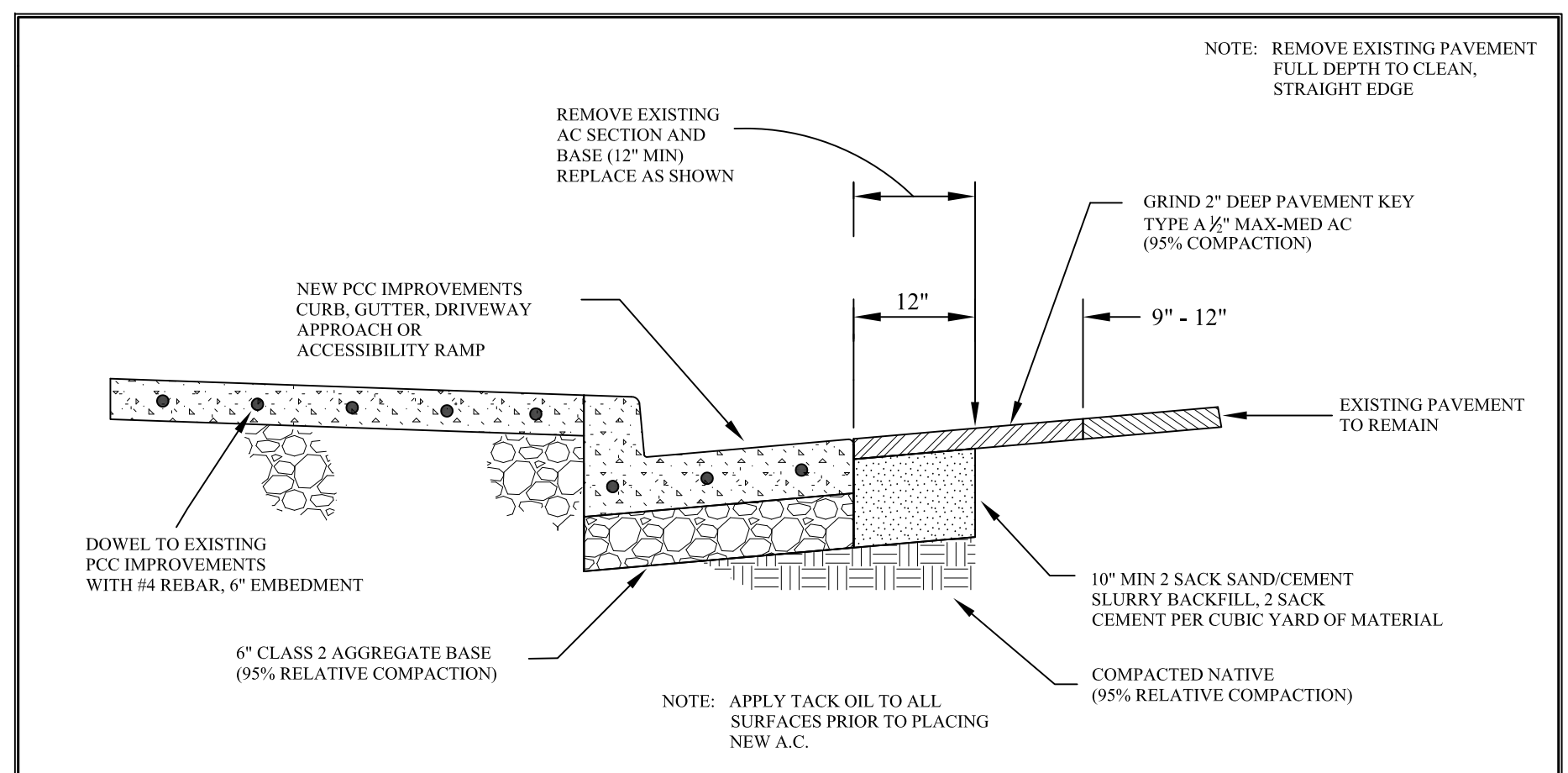
| | | | | |
|---|------------|--------------|--------------------------|-----------------------|
| CITY OF CAMPBELL PUBLIC WORKS DEPARTMENT | | REV. DATE BY | Curb & Gutter Details | SCALE: N.T.S. |
| DRAWN BY: _____ | DATE _____ | | | DETAIL NO. D-20 |
| CHECKED BY: _____ | DATE _____ | | | |
| APPROVED BY: _____ | DATE _____ | | | |



| | | | | | |
|---|------------|--------------|--|-------------------------------|-----------------------|
| CITY OF CAMPBELL PUBLIC WORKS DEPARTMENT | | REV. DATE BY | Curb, Gutter, and Sidewalk Configurations | SCALE: N.T.S. | |
| DRAWN BY: EA | DATE 02/04 | 1 02/17 HE | | Commercial Driveway Detail | DETAIL NO. D-18 |
| CHECKED BY: _____ | DATE _____ | | | | |
| APPROVED BY: _____ | DATE _____ | | | | |



| | | | | |
|---|------------|--------------|-------------------------------|-----------------------|
| CITY OF CAMPBELL PUBLIC WORKS DEPARTMENT | | REV. DATE BY | Commercial Driveway Detail | SCALE: N.T.S. |
| DRAWN BY: EA | DATE 02/04 | 1 02/17 HE | | DETAIL NO. D-18 |
| CHECKED BY: _____ | DATE _____ | | | |
| APPROVED BY: _____ | DATE _____ | | | |

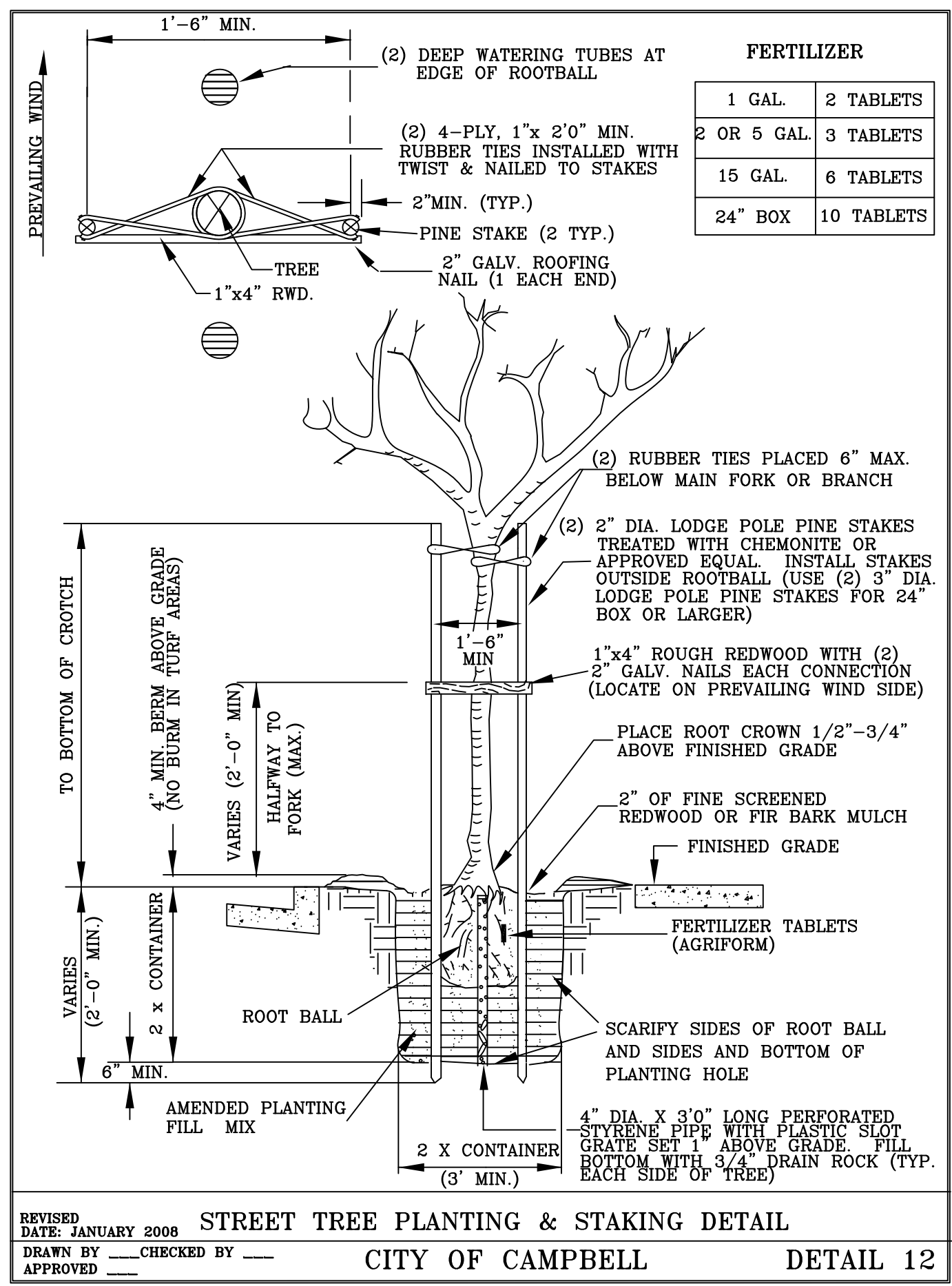


| | | | | |
|---|------------|--------------|--|----------------------|
| CITY OF CAMPBELL PUBLIC WORKS DEPARTMENT | | REV. DATE BY | A.C. Pavement Removal & Restoration at New PCC Improvements | SCALE: N.T.S. |
| DRAWN BY: _____ | DATE _____ | | | DETAIL NO. A-3 |
| CHECKED BY: _____ | DATE _____ | | | |
| APPROVED BY: _____ | DATE _____ | | | |

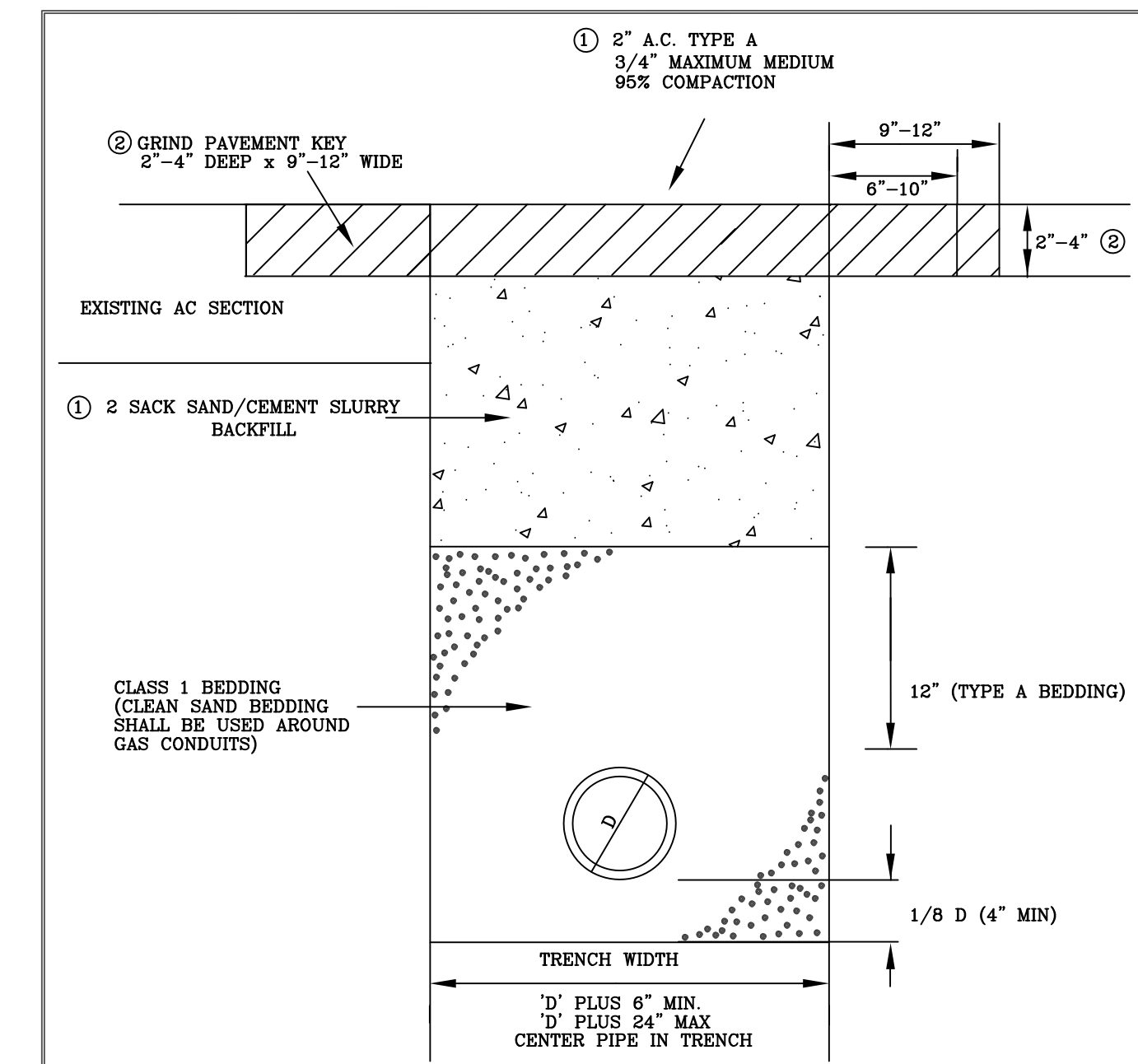
NOTES: (unless otherwise specified in the plans or special provisions)

- All trees shall be a minimum of 15-gallon size and of the variety indicated on the plans or specified by the City Engineer.
- Each tree shall be approved by the Engineer prior to planting. Contractor may request Engineer to pre-approve tree at local nursery.
- The exact location of each tree shall be approved by the Engineer prior to planting.
- Vertically cut the root ball at three or four places to loosen roots and discourage circling. Vertically scarify sides and bottom of planting hole.
- When planting, hold tree so that previous planting level is even with sidewalk level and gradually place top soil about the root ball.
- Top soil fill shall be an approved garden mix loam that is mixed at a 1:1 ratio with the native soil removed from the planting hole.
- When hole is three-quarters full, fill with water to compact the soil and eliminate air pockets.
- Fill planting hole with loose soil to ground level.
- Construct a watering basin around each tree as shown.
- Planting operations must be followed by a deep, thorough watering of each tree.
- Substitutions in tree varieties are permitted only upon written authorization from the City Engineer.
- All street trees installed in commercial and industrial shall be installed with an irrigation system (fed from on-site).

| | | | | |
|---|------------|--------------|----------------------------|---------------------|
| CITY OF CAMPBELL PUBLIC WORKS DEPARTMENT | | REV. DATE BY | STREET TREE PLANTING NOTES | SCALE: N.T.S. |
| DRAWN BY: _____ | DATE _____ | | | DETAIL NO. 13 |
| CHECKED BY: _____ | DATE _____ | | | |
| APPROVED BY: _____ | DATE _____ | | | |



| | | | | |
|---|------------|--------------|--|---------------------|
| CITY OF CAMPBELL PUBLIC WORKS DEPARTMENT | | REV. DATE BY | STREET TREE PLANTING & STAKING DETAIL | SCALE: N.T.S. |
| DRAWN BY: _____ | DATE _____ | | | DETAIL NO. 12 |
| CHECKED BY: _____ | DATE _____ | | | |
| APPROVED BY: _____ | DATE _____ | | | |



| | | | | |
|---|------------|--------------|---|--------------------|
| CITY OF CAMPBELL PUBLIC WORKS DEPARTMENT | | REV. DATE BY | TRENCH RESTORATION - METHOD A Backfill and Surface Restoration | SCALE: N.T.S. |
| DRAWN BY: _____ | DATE _____ | | | DETAIL NO. 7 |
| CHECKED BY: _____ | DATE _____ | | | |
| APPROVED BY: _____ | DATE _____ | | | |

| | | | | |
|--|--|-----------|--|--------------|
| Chkd | | | | |
| Date | | | | |
| Revision | | | | |
| No. | | | | |
| Date: | | Drawn By: | | Designed By: |
| CONSULTANT INFO | | | | |
| CITY STANDARD DETAILS OFF-SITE STREET IMPROVEMENT PLANS PROJECT ADDRESS ENCROACHMENT PERMIT NO. | | | | |
| CITY OF CAMPBELL PUBLIC WORKS DEPARTMENT CAMPBELL, CALIFORNIA | | | | |
| SCALE: N.T.S. | | | | |
| SHEET: XX OF XX | | | | |